



Queensland
Government

Sexual Offending Programs Unit

Linda Bennett
A/Manager, SOPU



Queensland
Government

Background

- CBRC funding provided to enhance sexual offending program service delivery within Queensland custodial centres
- The project commenced in January 2005 and the Offender Programs Unit commenced operating in September 2005



Strategy to address sexual offending program needs

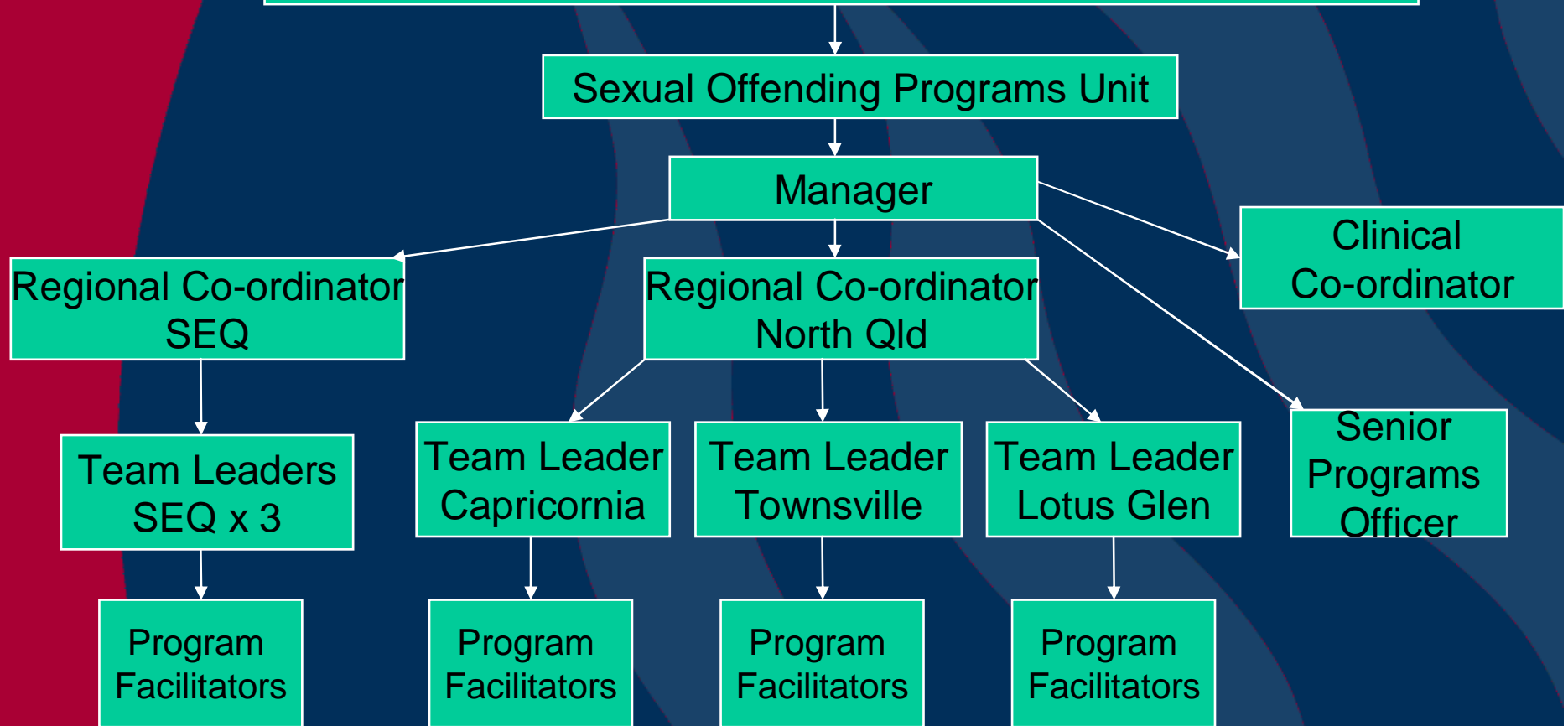
1. Centralised Service Delivery Model developed
 - SEQ team & NQ team (CCC, TWN, LGCC)

2. Specialised assessment methodology
 - Program allocation targeted to offender risk/needs
 - Staff trained in specialised assessment tools
 - Sustainable training strategies devised

1. Suite of Sexual Offending Programs
 - Range of interventions to match offender risk/need levels

Service Delivery Model

Offender Programs and Services Directorate



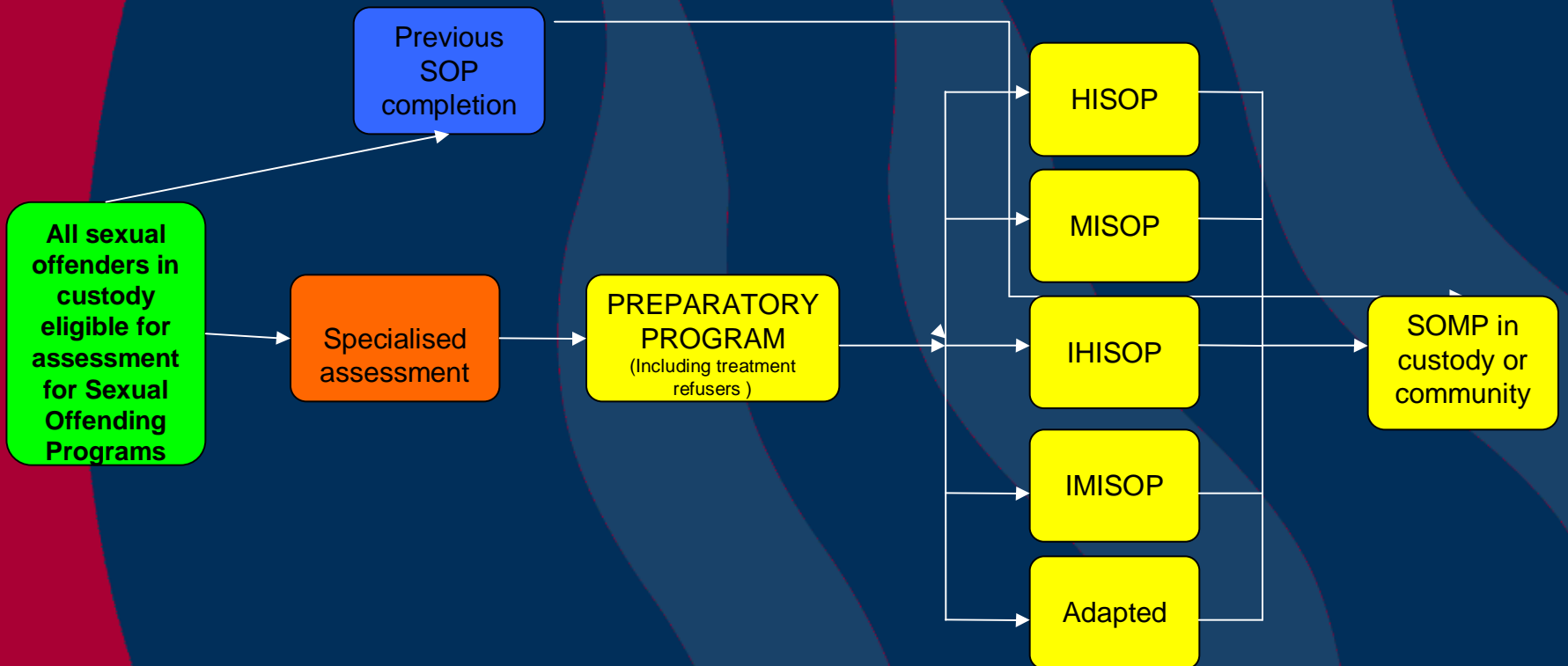


Queensland
Government

Assessment & Program

Assessment Phase Preparatory Phase Treatment Phase Maintenance Phase

Process



Assessment & Program Allocation Prioritisation Process

- Court directed Parole
- Past Parole
- Once past Parole – Full-time date
- Parole pre 12/07
- Parole post 12/07 – Full-time date

Minimum Time Frames for Assessment & Intervention

Low-Moderate Risk Offenders

3 weeks	4 weeks	2 weeks	3 weeks	4 weeks	3-5 months
Intake assessment (incl. ORNI-R)	Transfer to placement centre	Centre Induction	Specialised Assessment Sexual Offending Programs	Preparatory Program	Medium Intensity Sexual Offending Program
				VET	
				Transitions	

Total = 7-9 months

Minimum Time Frames for Assessment & Intervention

Moderate Risk Offenders

3 weeks	4 weeks	2 weeks	3 weeks	8 weeks	5 months	6 months	10 weeks
Intake assess. (incl. ORNI-R)	Transfer to placement centre	Centre Induction	Specialised Assessment Sexual Offending Programs	Prep Program	Medium Intensity Sexual Offending Program	Required timeframe between intensive intervention and maintenance phase of intervention	Sexual Offending Maintenance Program
				VET			
				Transitions			

Total = 1.5 years

Minimum Time Frames for Assessment & Intervention

High Risk Offenders

3 weeks	4 weeks	2 weeks	3 weeks	8 weeks	9 months	6 months	10 weeks
Intake assess. (incl. ORNI-R)	Transfer to placement centre	Centre Induction	Specialised Assessment Sexual Offending Programs	Prep Program	High Intensity Sexual Offending Program	Required timeframe between intensive intervention and maintenance phase of intervention	Sexual Offending Maintenance Program
				VET			
				Transitions			

Total = 1 year 10 Months



Rolling Programs

- No fixed start or end date
- Offender centred
- Flexibility for accommodating DPSSOA

- Individual Intervention Plans
- Structured intervention
- Dynamic record of progress

Getting Started: Preparatory Program

Target Group

Offenders with outstanding responsivity issues

Offenders currently refusing to undertake specialised assessment

Duration & Intensity

6 – 8 weeks

2 sessions x 2 ³/₄ hrs per week

Cross Roads: High Intensity Sexual Offending Program

Target Group

High risk offenders

Duration & Intensity

9 months

3 x 3 hr sessions per week



Queensland
Government

New Directions: Medium Intensity Sexual Offending Program

Target Group

Medium risk offenders

Duration & Intensity

3-5months (rolling program)

2 sessions x 3hrs per week

Staying on Track: Sexual Offending Maintenance Program

Target Group

Offenders with a previous program completion

Duration & Intensity 8 – 10 weeks

1 session x 2.5 hrs per week

Current Project Status

- 845 Sexual Offenders in Custody
- Specialised Assessments
 - 519 conducted to date
- Programs
 - Delivery of 9 programs
 - 295 individual program completions
 - 69 individuals currently in programs
- Implementation Plan
 - On target to meet objective of 300 program completions June 07



Queensland
Government

Program Delivery Sites

SEQ

- Wolston
- Borallon

NQ

- Capricornia
- Lotus Glen
- Townsville



Cognitive Behavioural Theory

- What do we mean by *cognitive*?
- Mental Processes.
- Thinking and Reasoning.
 - ✓ Thoughts
 - ✓ Beliefs
 - ✓ Attitudes
 - ✓ Opinions



Queensland
Government

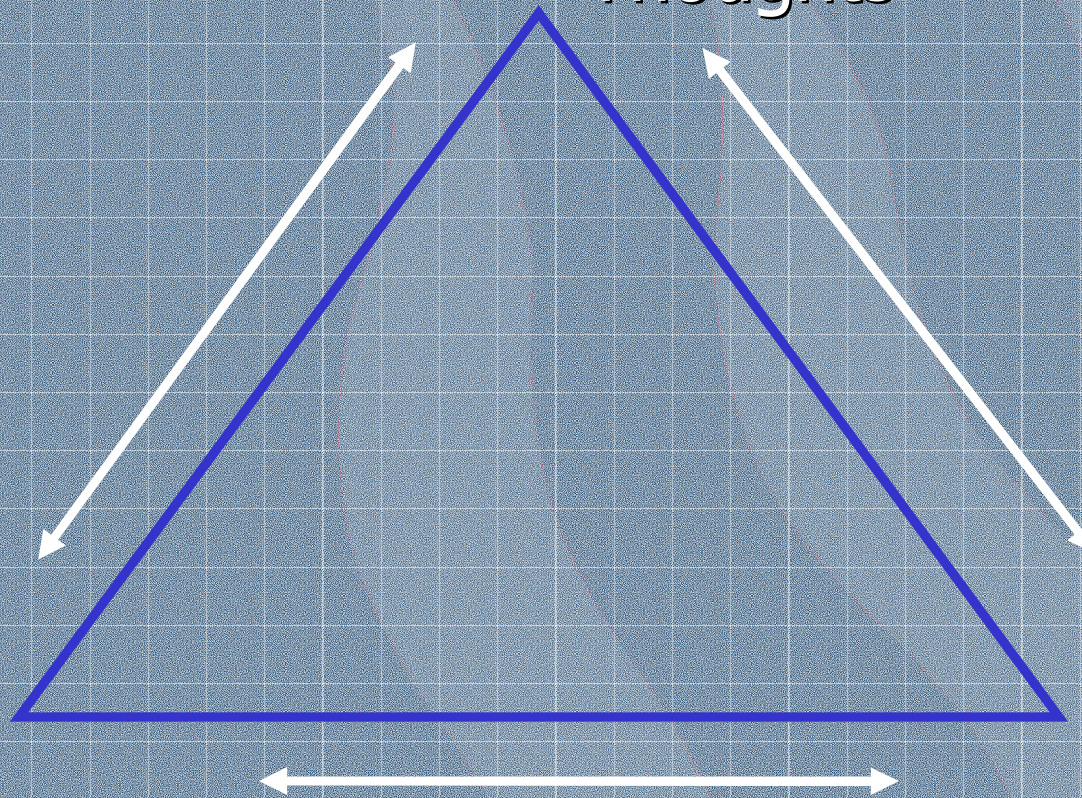
The CBT Model

Context

Thoughts

Behaviour

Feelings

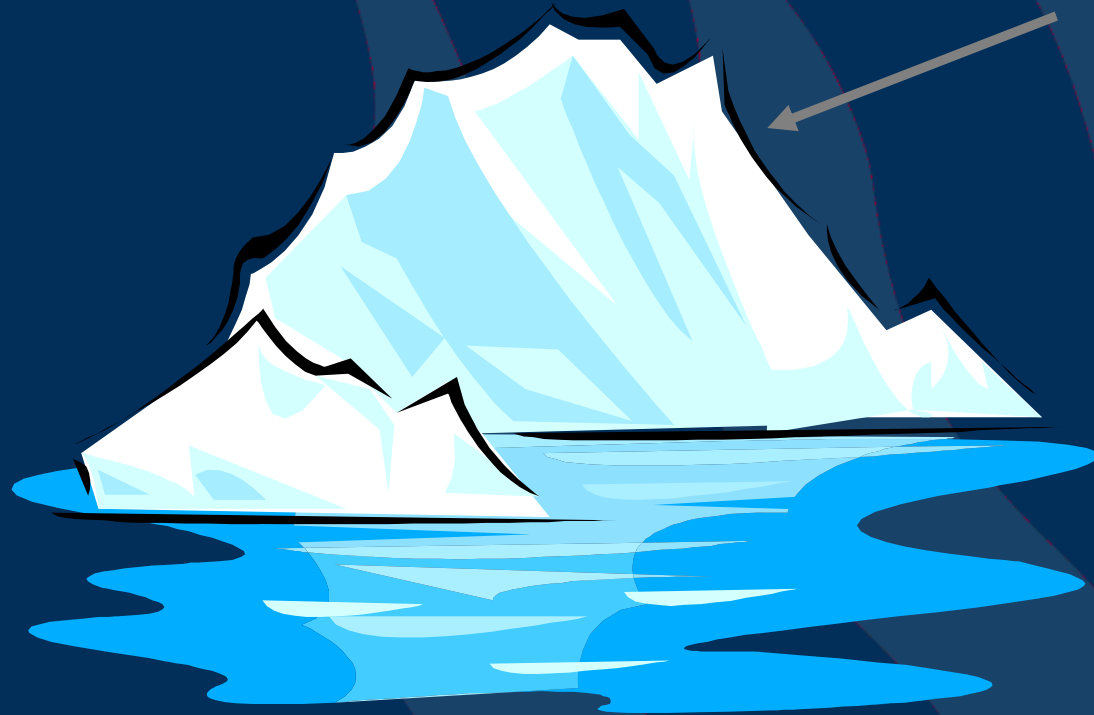




Queensland
Government

The Correctional Focus

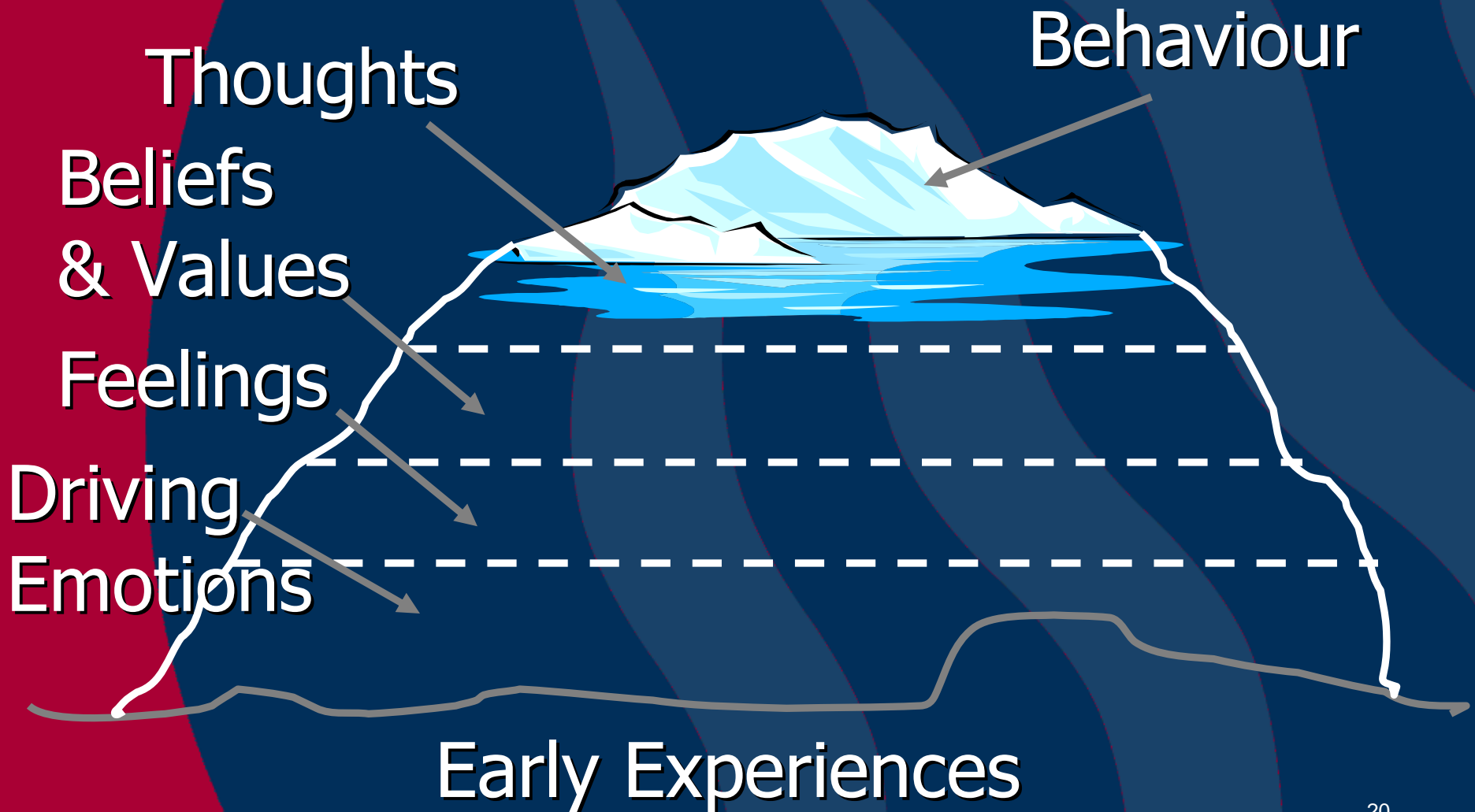
Behaviour





Queensland
Government

What We Need To Consider



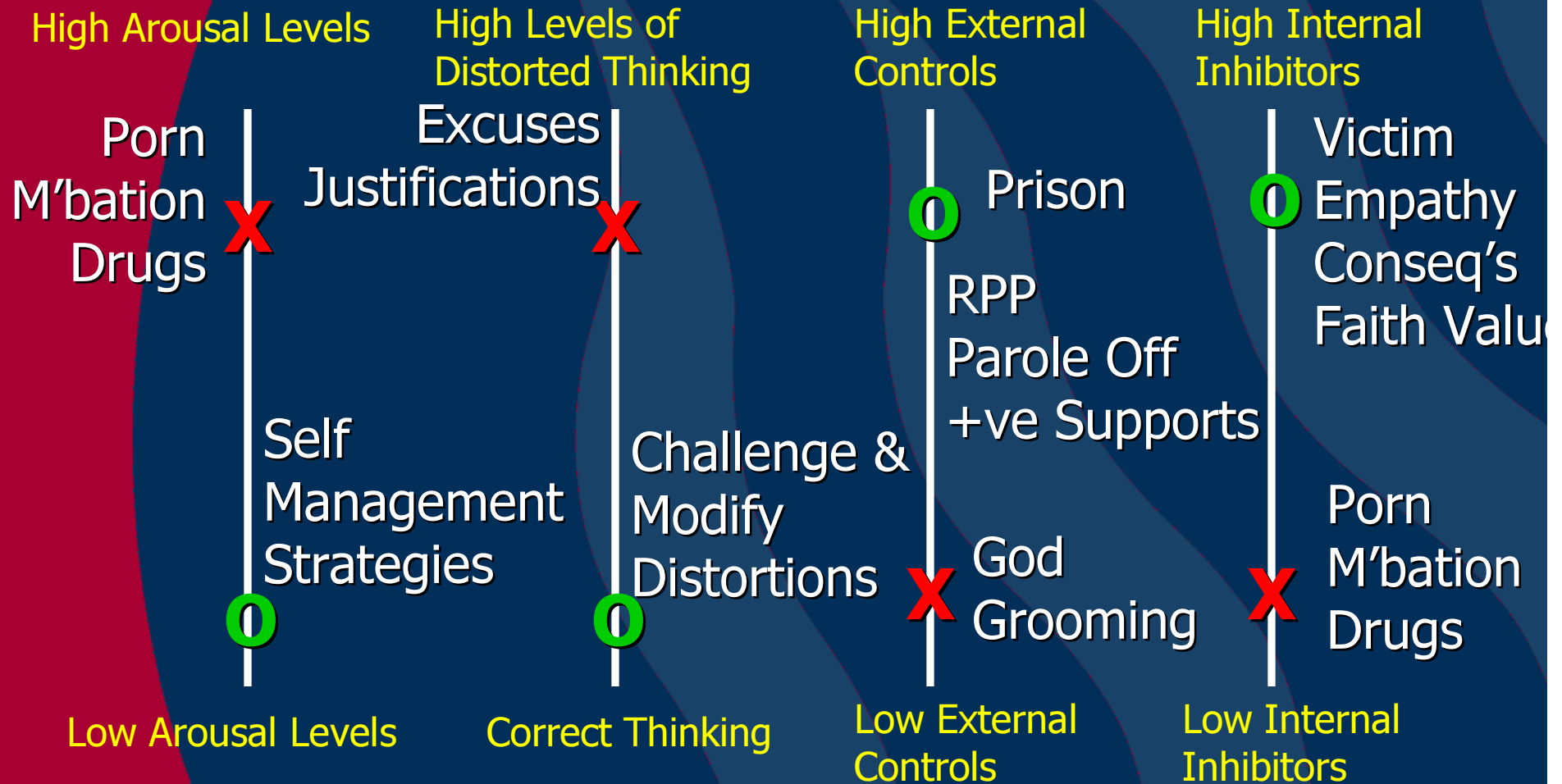


Queensland Government

A Risk Management Framework

X = Conditions when offending

O = Less likely to offend





Denial & Minimisation

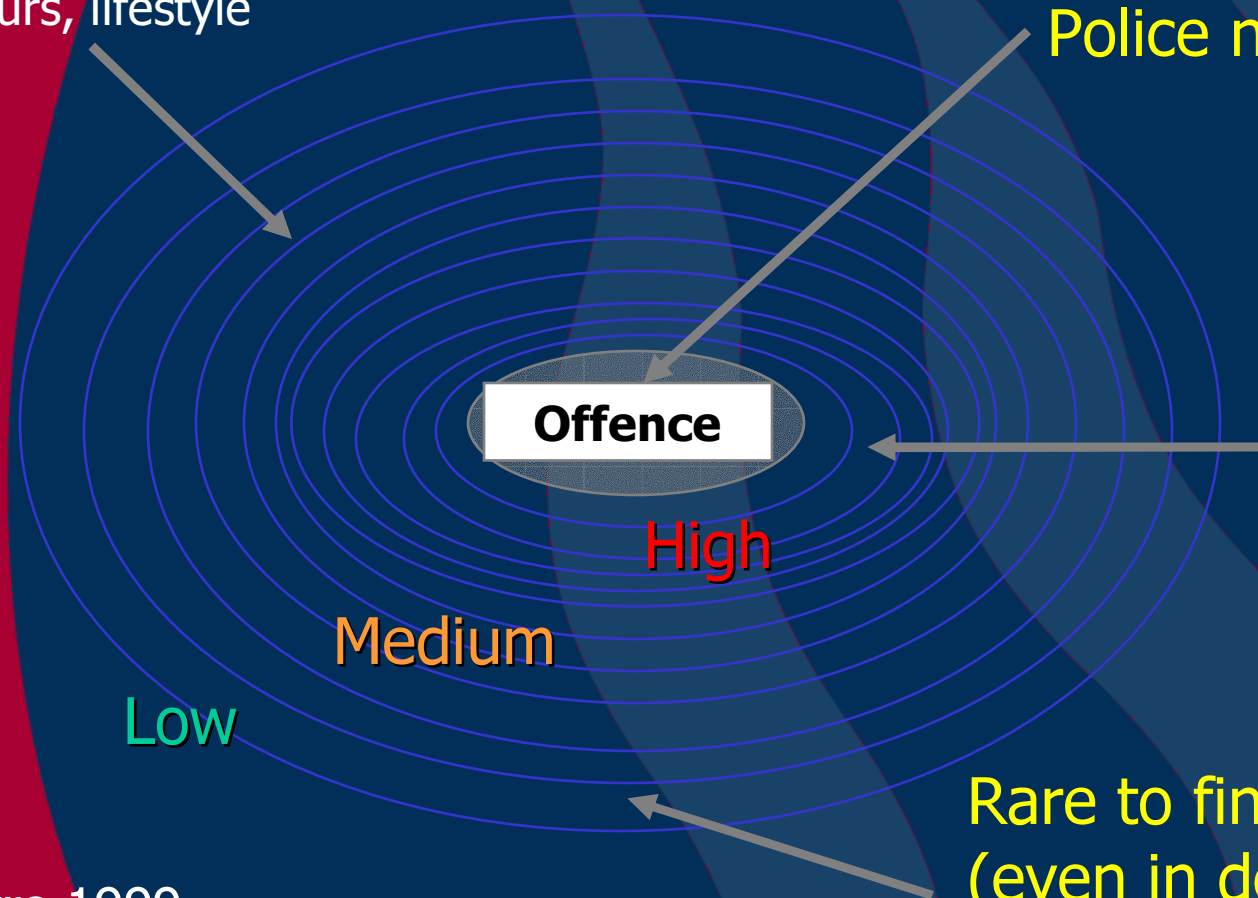
- Denial is a normal human response to traumatic events
- Denial and minimisation are normal in sexual offenders
- All sexual offenders engage in some level or degree of denial
- There is no evidence to support that denial, minimisation and extent of disclosure are related to risk for recidivism



Queensland
Government

Maintaining Innocence

Attitudes, beliefs,
behaviours, lifestyle



Police need this.

Can work
with an
offender
here where
he is still
clearly a risk.

Rare to find offender
(even in denial) out here.

Wyre 1999